



giving
nature
a home

Informing landscape-scale conservation at RSPB

Steven Ewing

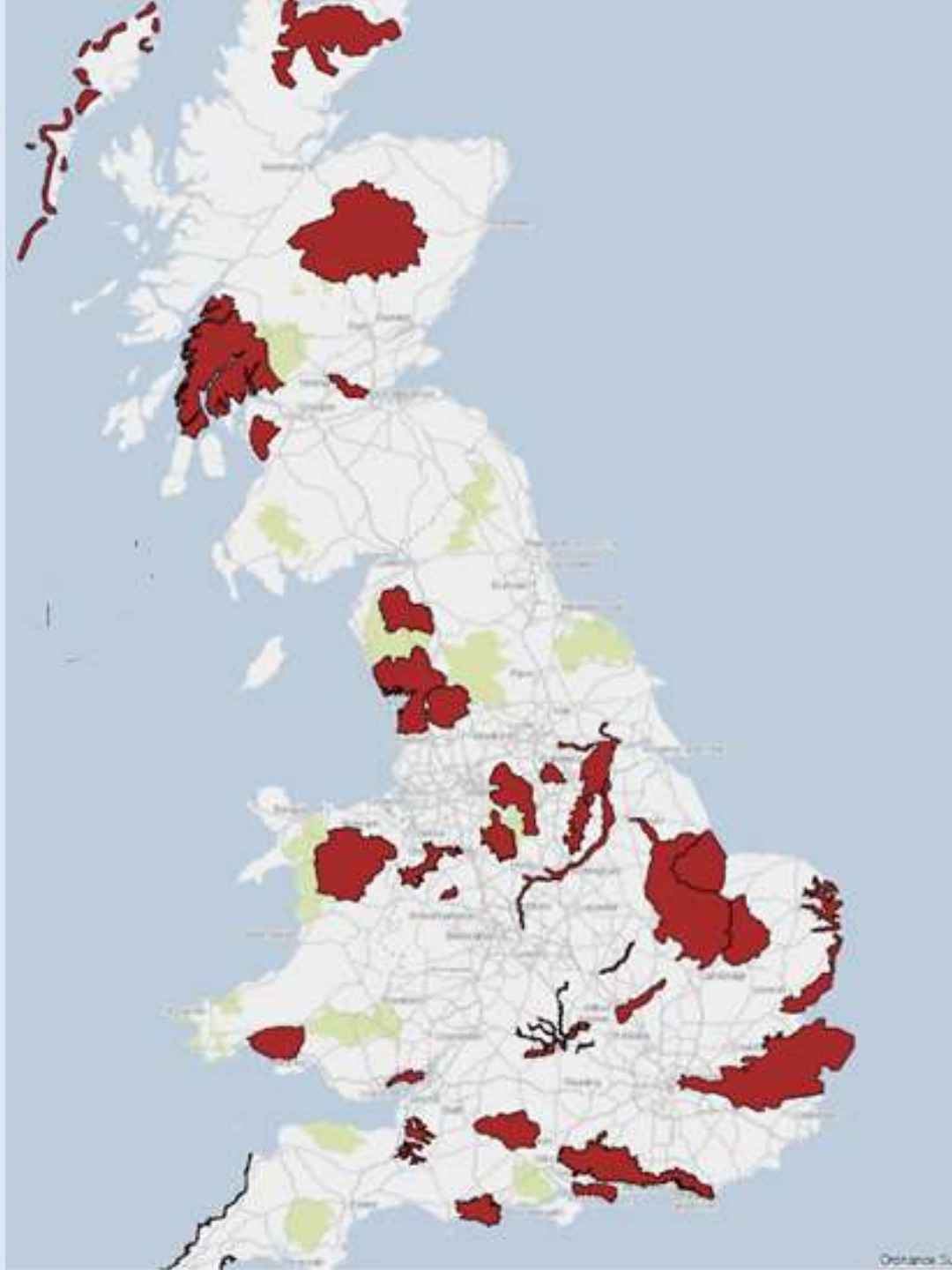
RSPB CENTRE FOR CONSERVATION SCIENCE



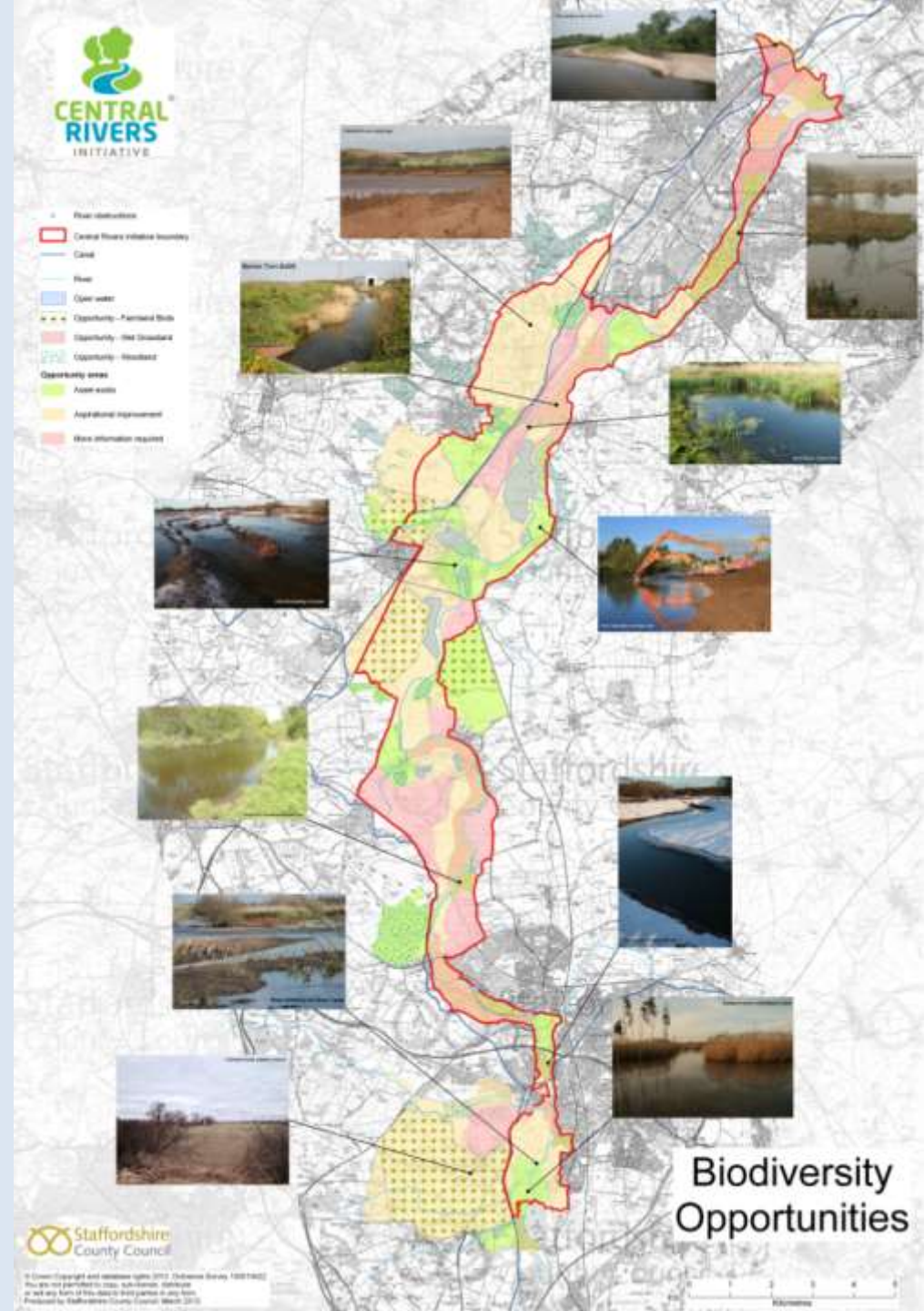
RSPB's reserve network.....



RSPB's Futurescapes Initiative

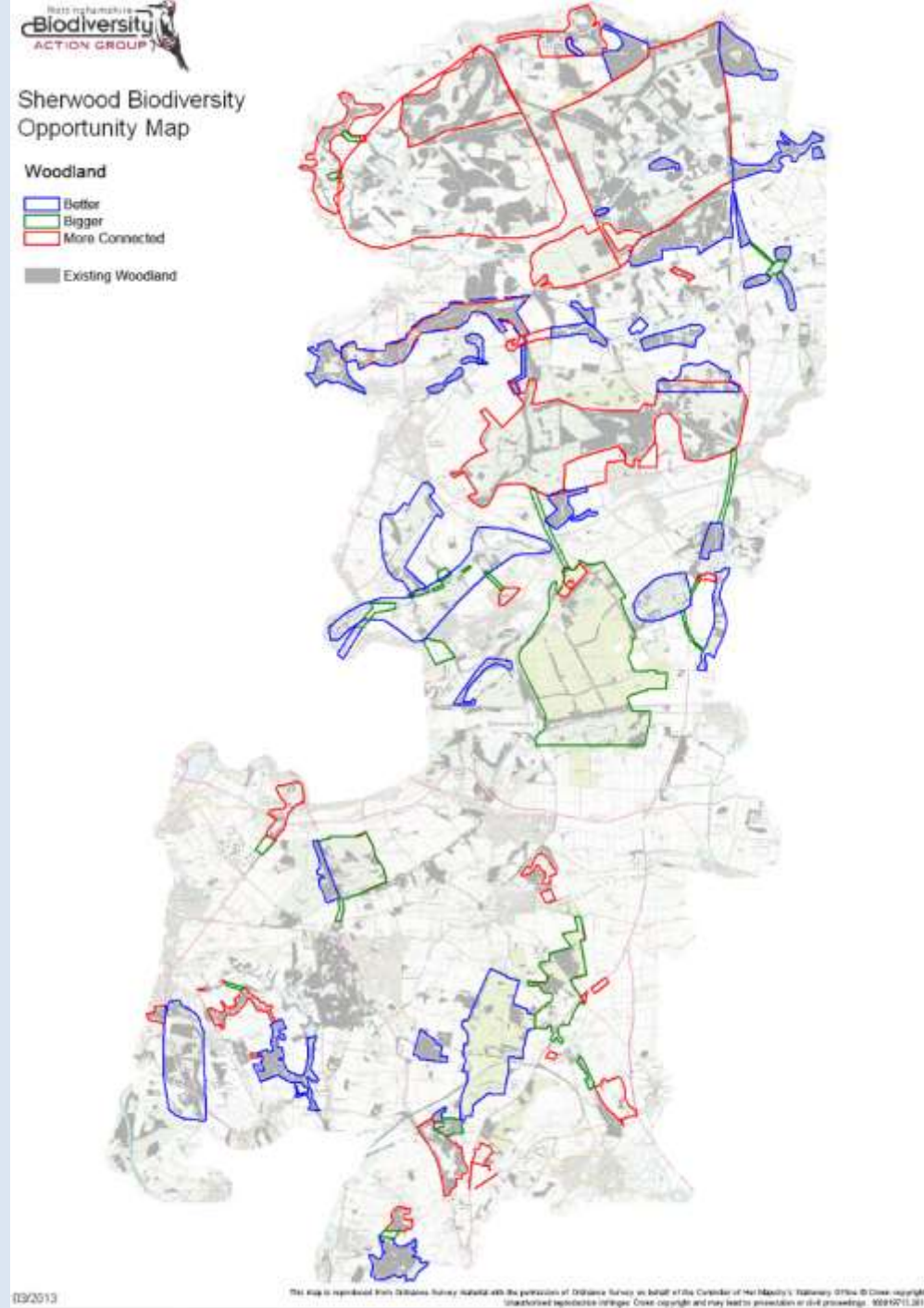


Futurescapes – Central Rivers Initiative

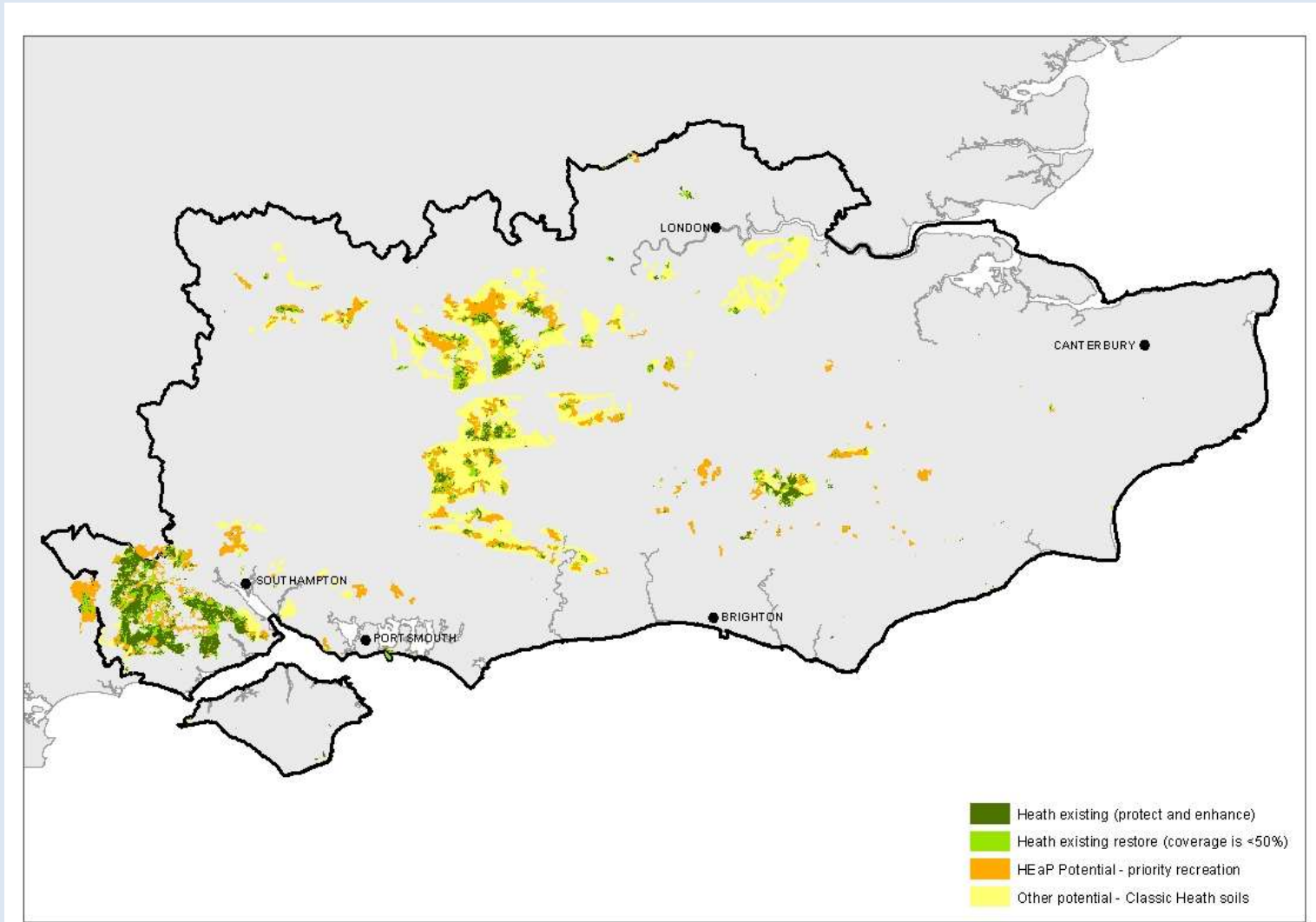


Futurescapes – Sherwood Forest

- Why are HNM's not used more?
 - Unaware of existence.
 - Time-consuming and expensive.
 - Date requirements and technical expertise.
 - Unclear that they offer substantially better conservation outcomes than alternatives.



RSPB's Spatial Vision for Nature Initiative – Heathland in southeast England



RSPB research projects using HNMs – Woodland grouse and climate change

- Can the resilience of woodland grouse to climate change be increased by modifying the amount and structure of habitat in the landscape?
- Use RAMAS GIS, which links demographic models with landscape structure.
- Climate change impacts modelled by varying the frequency of catastrophes affecting breeding success to mimic changes in occurrence of extreme summer rainfall.



Future.....

- Two months in the new financial year to devote to working up RSPB case studies illustrating the utility of HNM's for informing conservation planning, and potentially run demonstration workshops.
- Perhaps leading to greater use of these tools within RSPB.....?!?