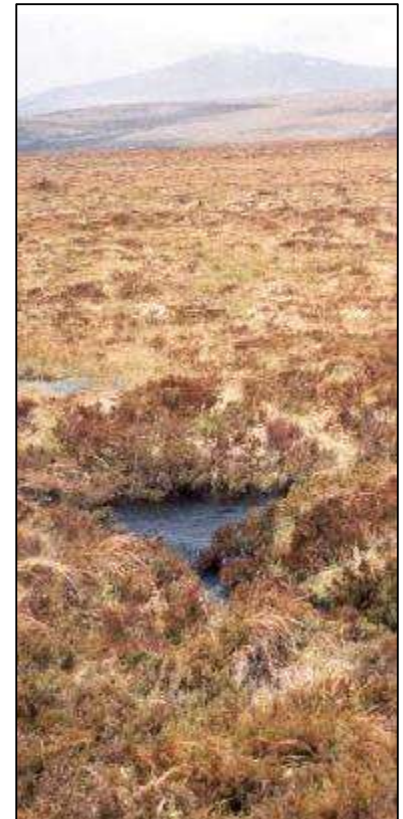
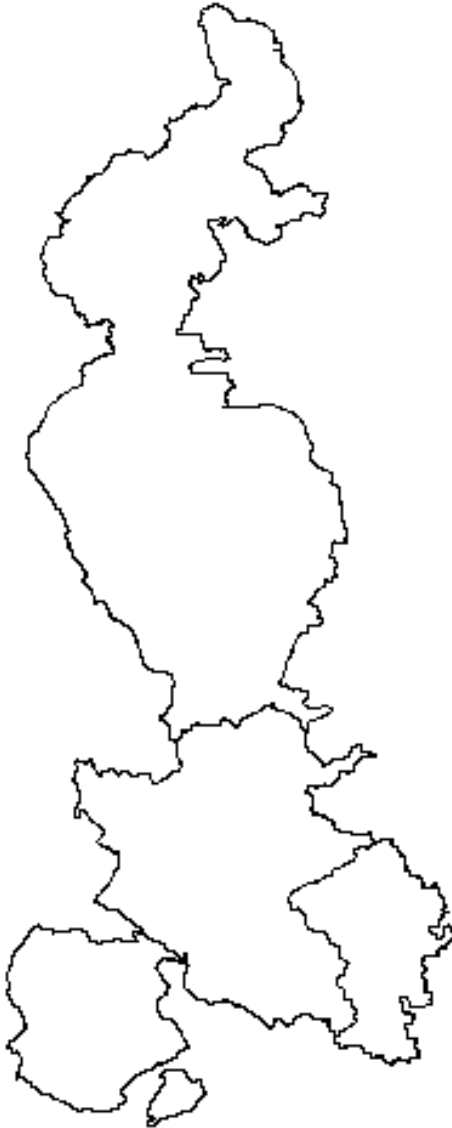


Northern Upland Chain LNP: A pragmatic approach to habitat network models

Fran Graham - YDNPA





Ecological Networks Strategy: 2014-18



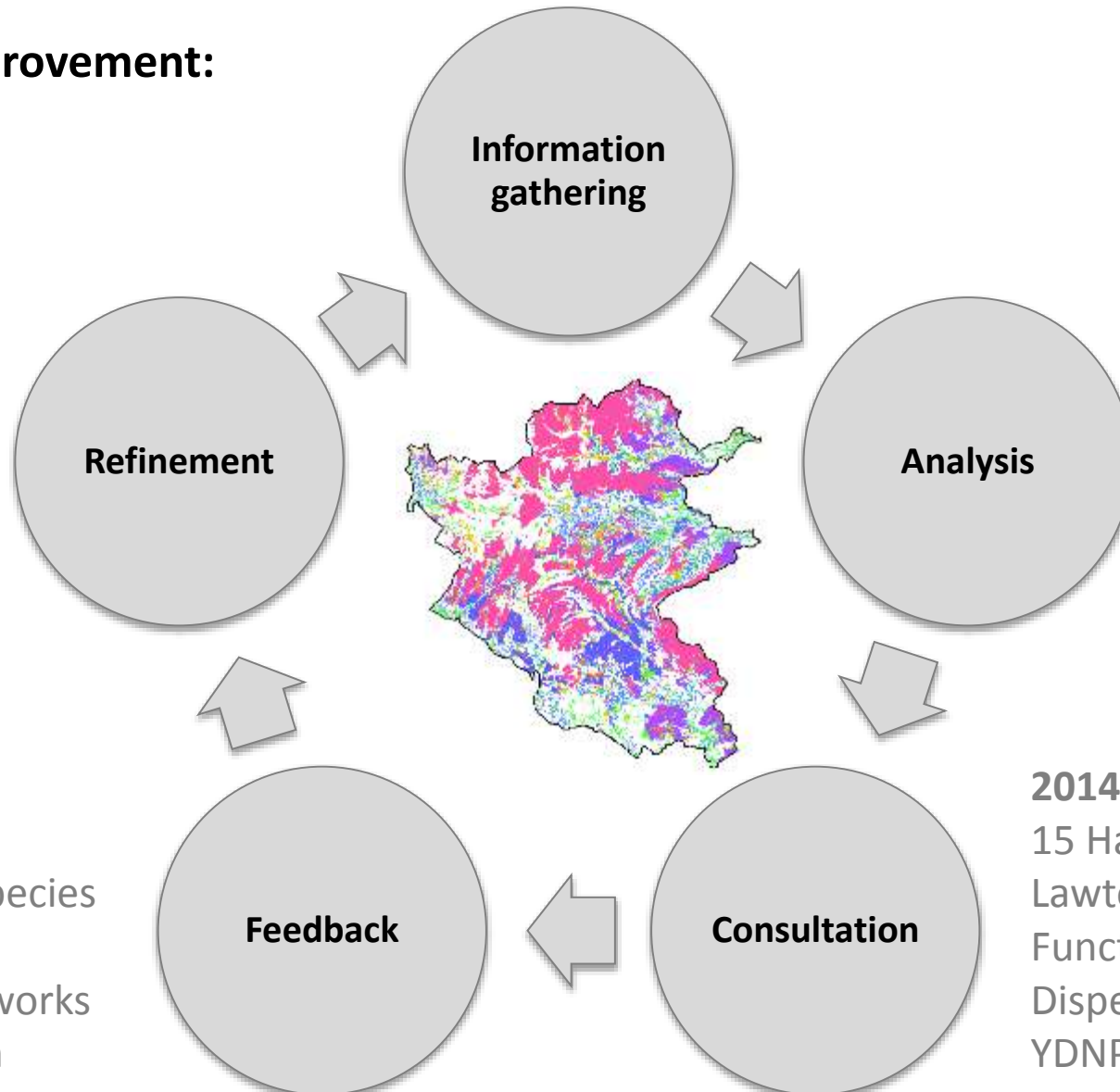
Fran Graham, Yorkshire Dales National Park Authority,
and
Roger Catchpole, Aspen International
February 2014

Direction:

By 2018, YDNP will have established more coherent ecological networks that have greater resilience to current and future pressures

Model Development: 2012 - 2014

Continual improvement:



2012-2014:

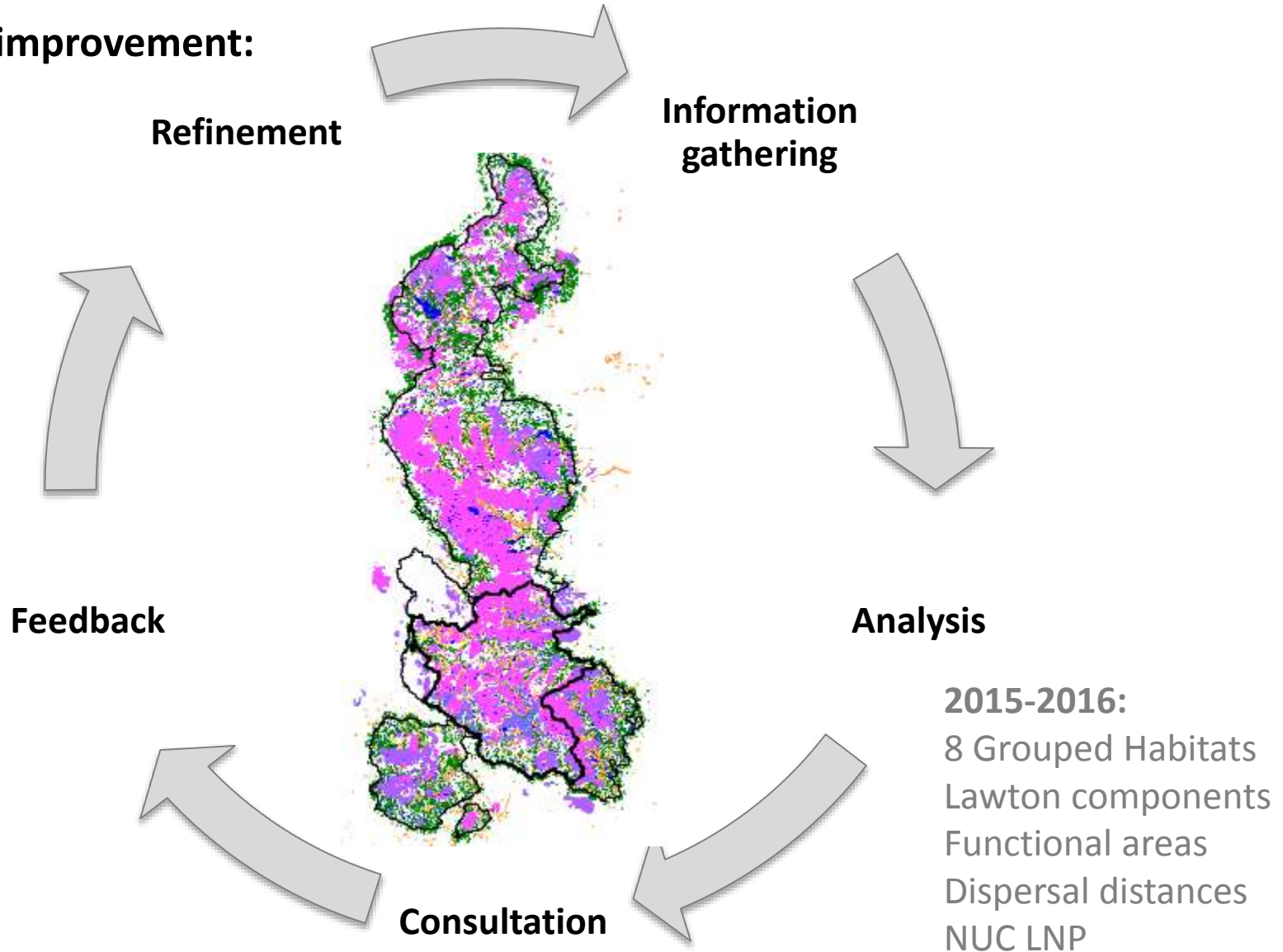
4 Habitats
Generic focal species
Least-cost
Permeable networks
Forest Research

2014-2015:

15 Habitats
Lawton components
Functional areas
Dispersal distances
YDNPA

Model Development: 2015-2016

Continual improvement:



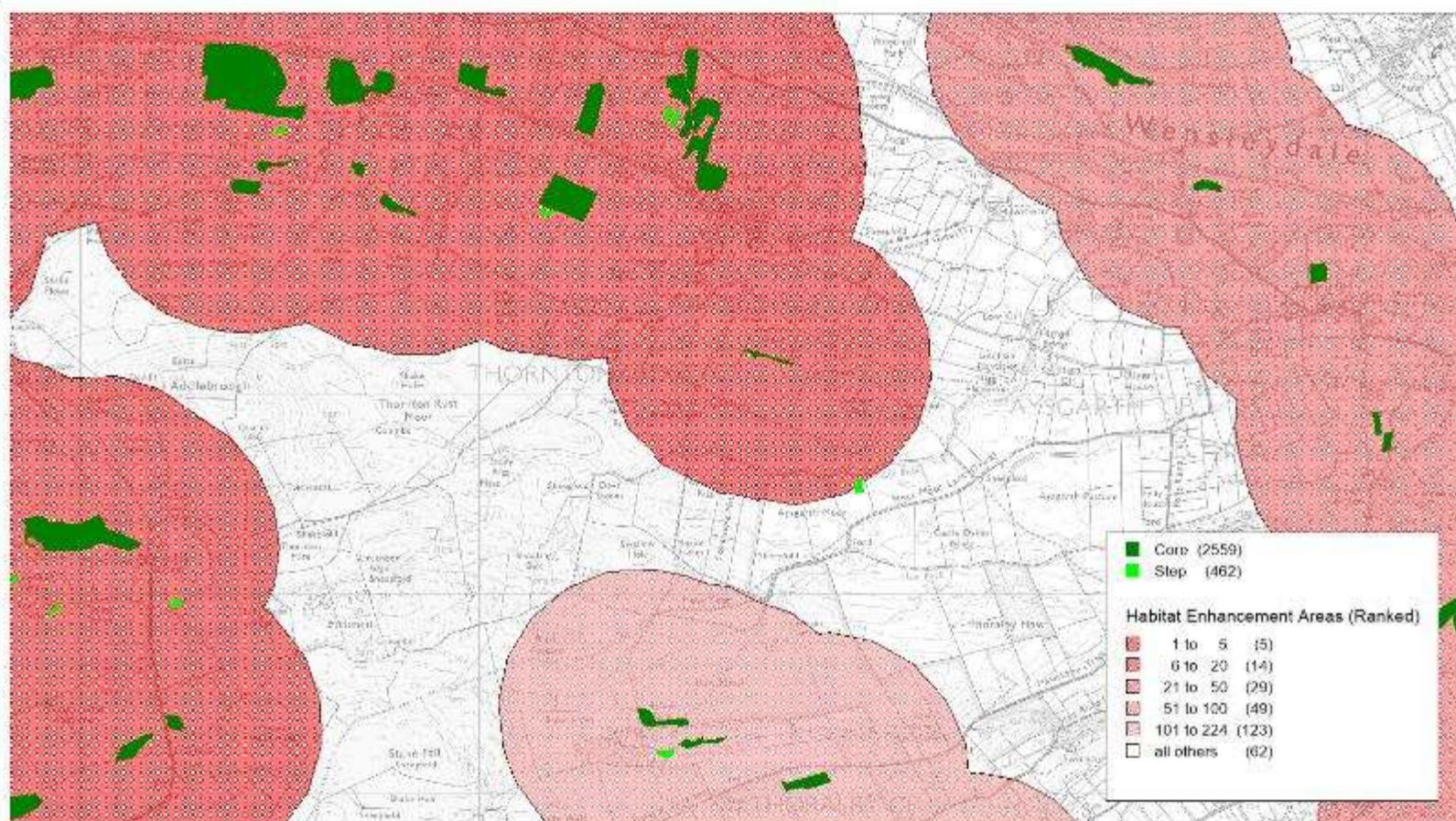
2015-2016:

8 Grouped Habitats
Lawton components
Functional areas
Dispersal distances
NUC LNP

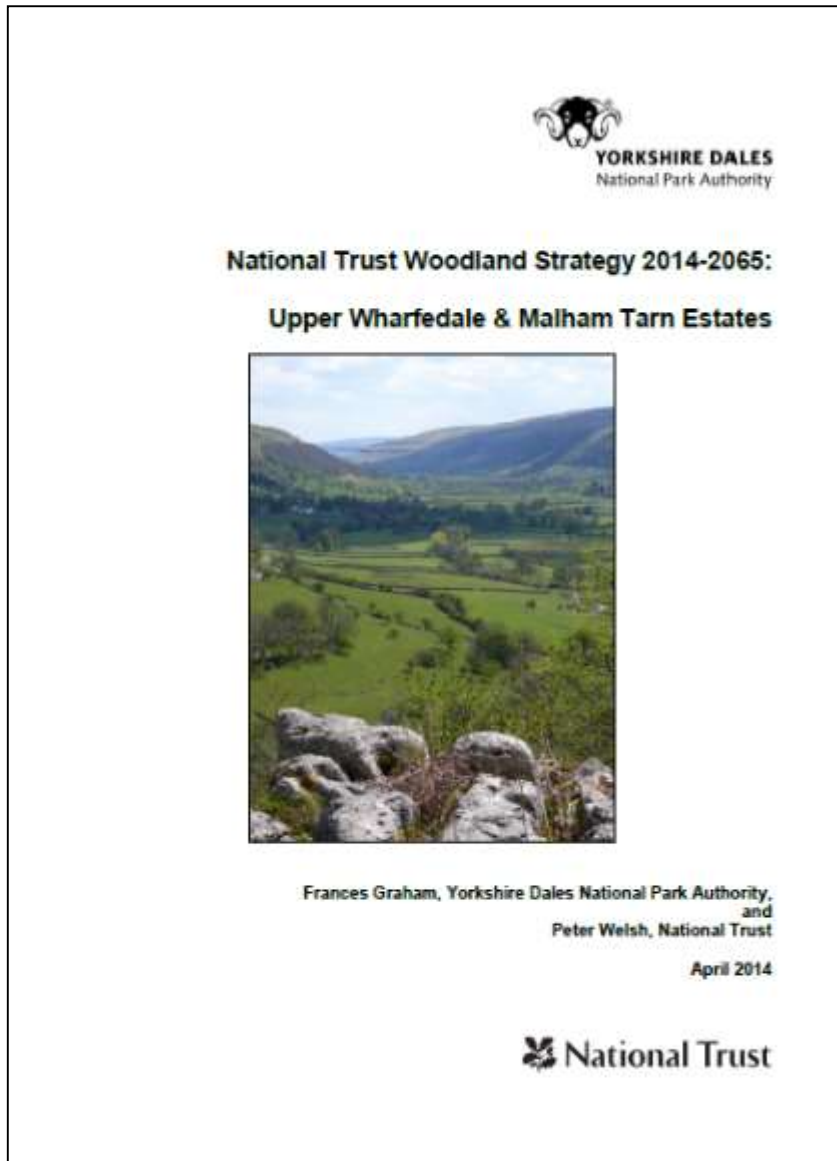
NUC LNP: Ecological networks: Upland & Lowland Hay Meadows

Scale 1:26464

Compiled by Fern Graham on 11 March 2016



Landholding scale (2014)



**1. Ecological network approach
was 1 of 4 guiding principles**



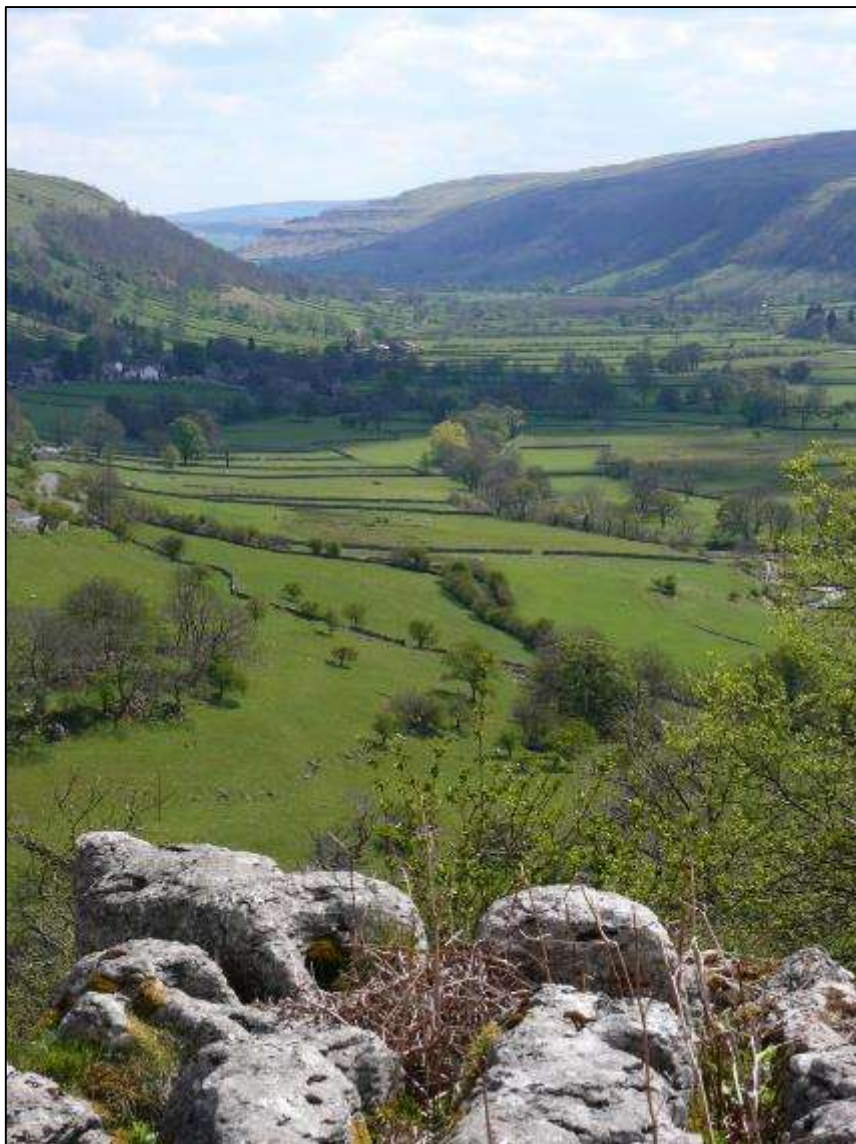
2. Scored all land parcels based on:

- Constraints
- Opportunities

**3. Prioritised land parcels based on
connectivity potential within HEAs:**

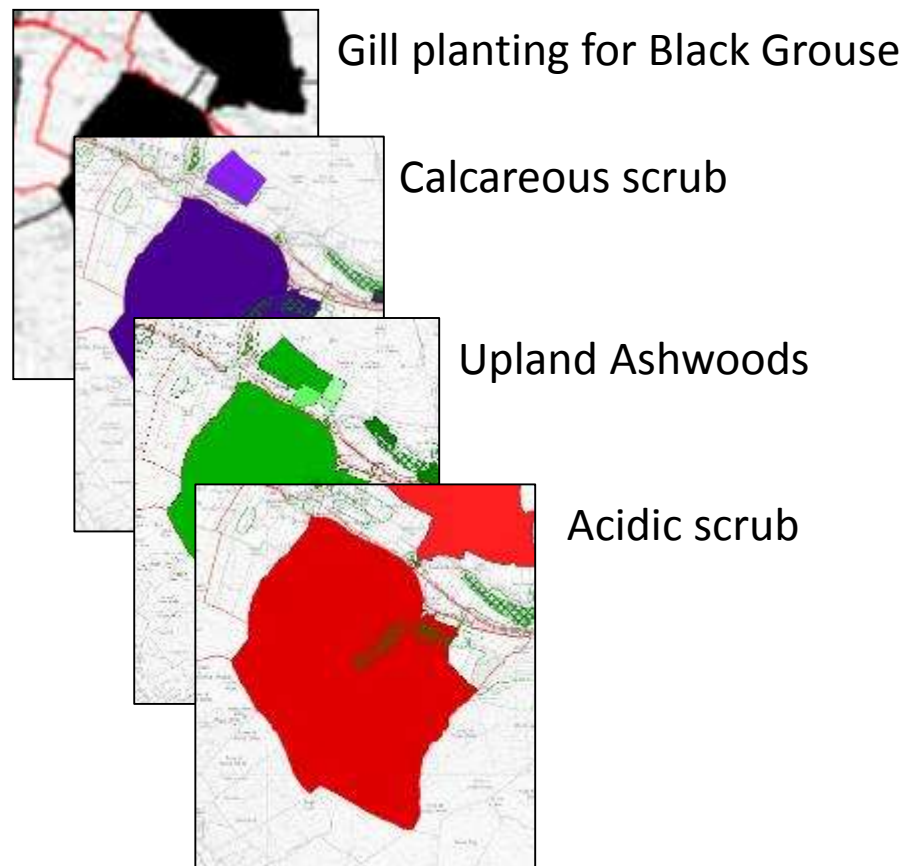
- Pinchpoints & gaps in woodland
- Other extension of woodland
- Creation within network
- Extending network

Landholding scale

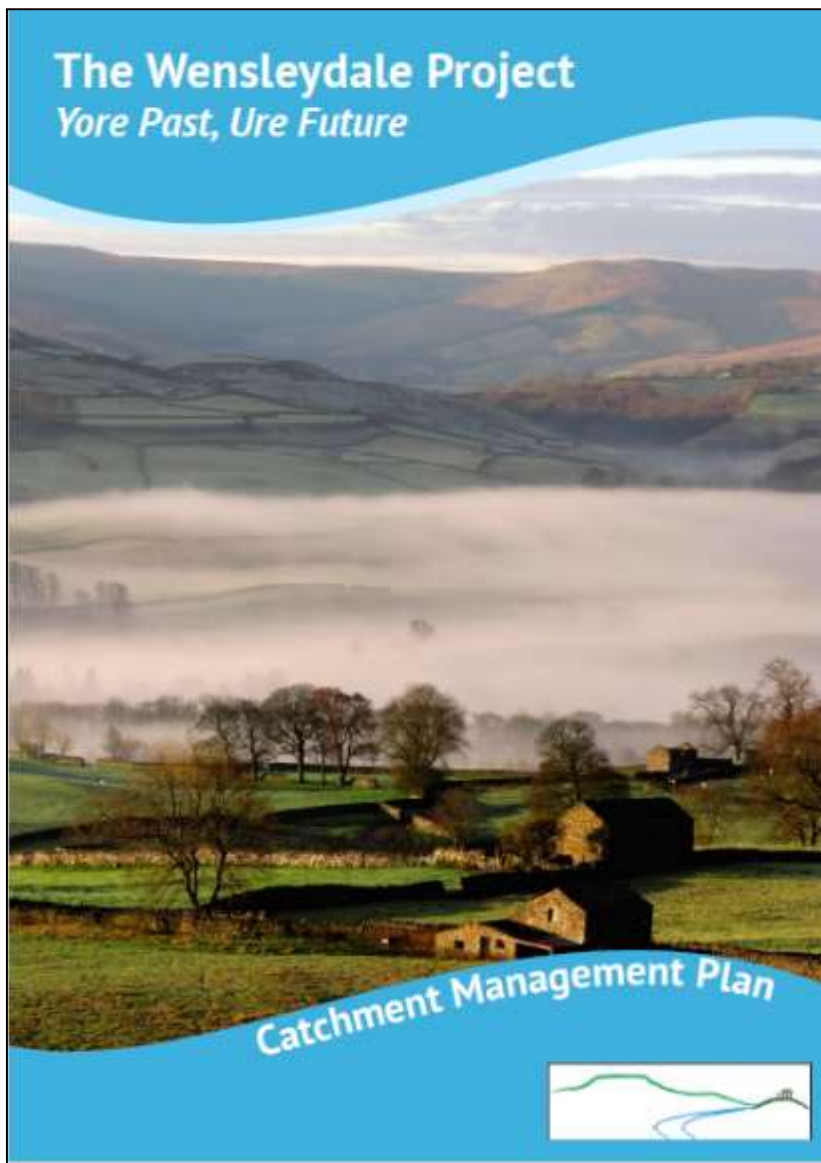


NT Yorkshire Dales Appeal

E.g. Horsehead Moor Common
High connectivity potential for :



Catchment scale (2015)



1. Outputs informed:

- Evidence base
- Biodiversity priorities
- Strategy development
- Project targeting



2. Outputs used in-combination enabled:

- Analysis of multiple benefits

3. Project funding being sought

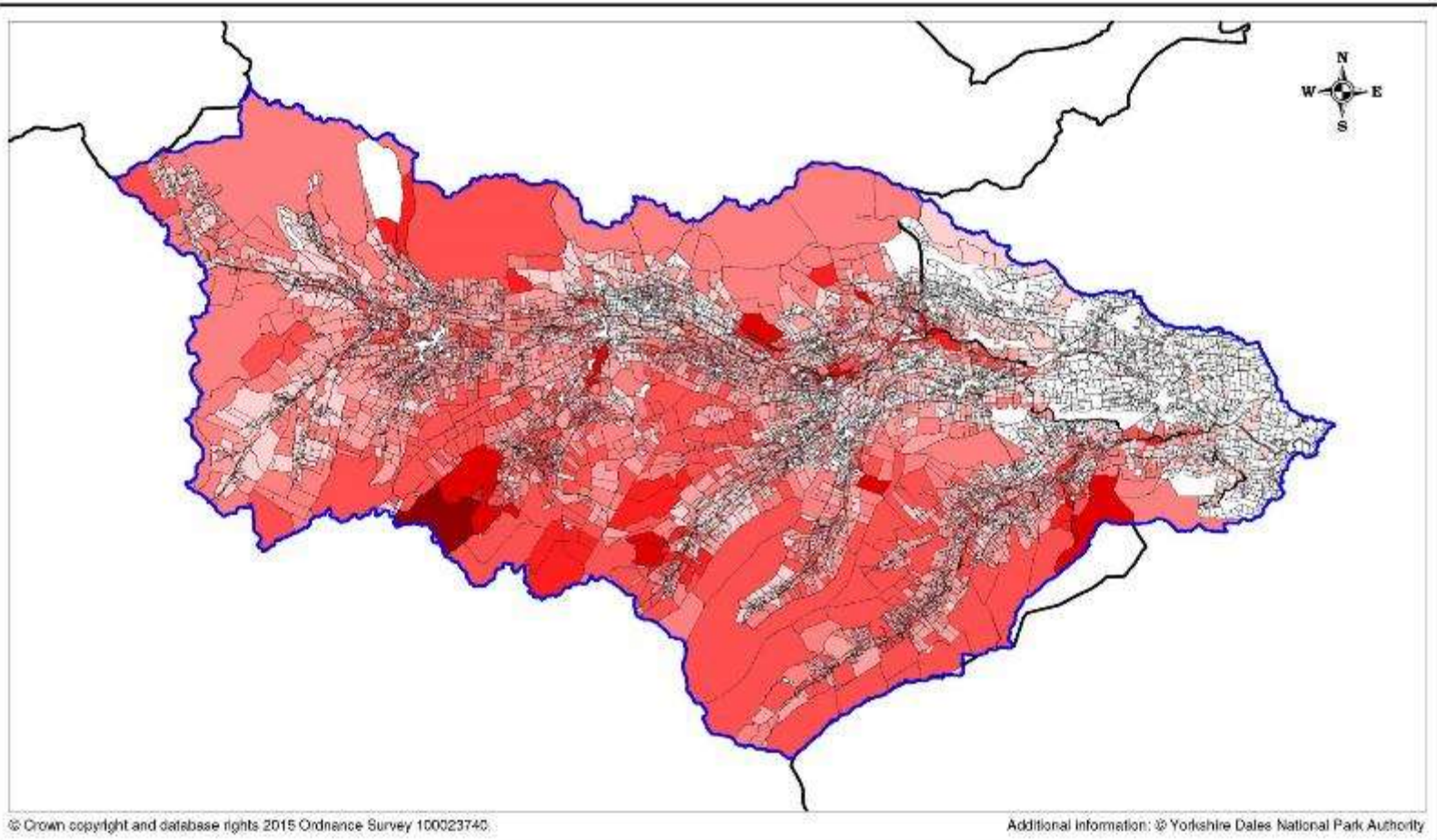
Practice: Catchment scale

Provisional Heat Map: Distribution of multiple benefits

Based on the equal scoring of NPMP objectives C1, C2, C4, C5, D1, D4, D6. Source: Mapped by YDNPA.

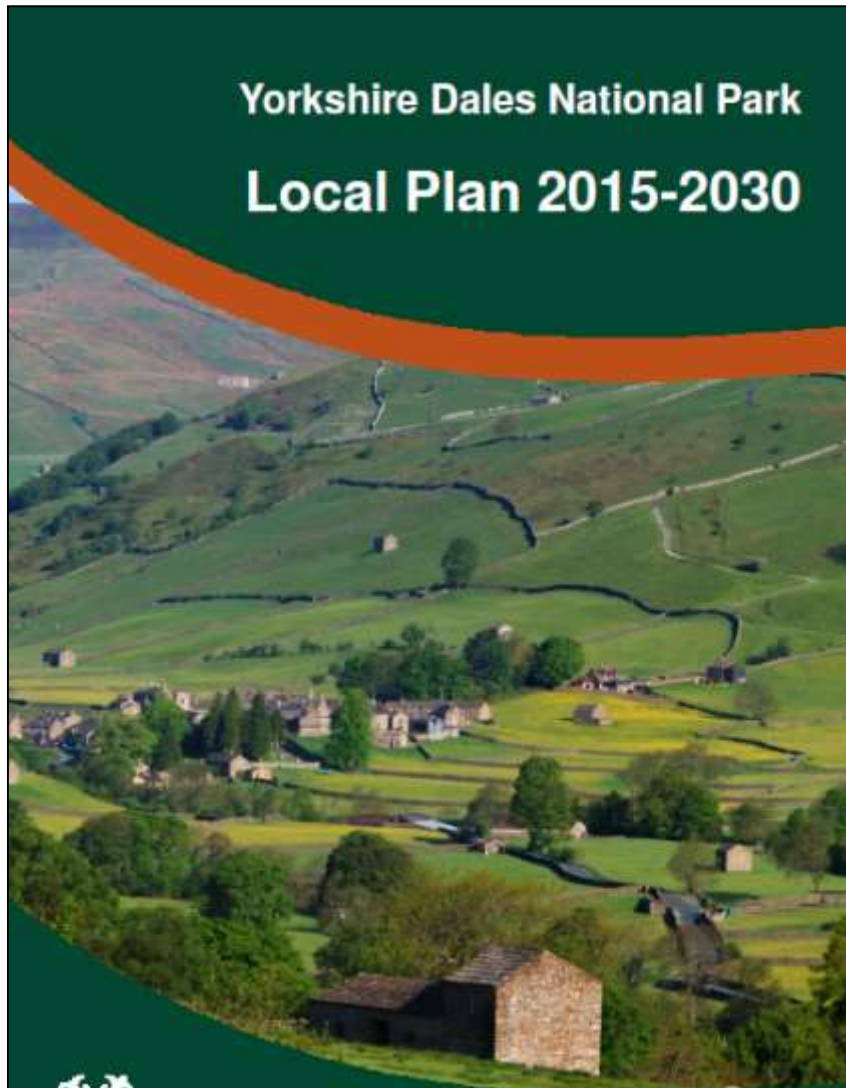
Scale 1:176563

Compiled by Fran Graham on 24 March 2015



National Park scale (2016)

Yorkshire Dales National Park Local Plan 2015-2030



NPPF Requirements

117. Policies should identify and map components of the local ecological networks



113. protection of sites gives appropriate weight to their importance and the contribution that they make to wider ecological networks.

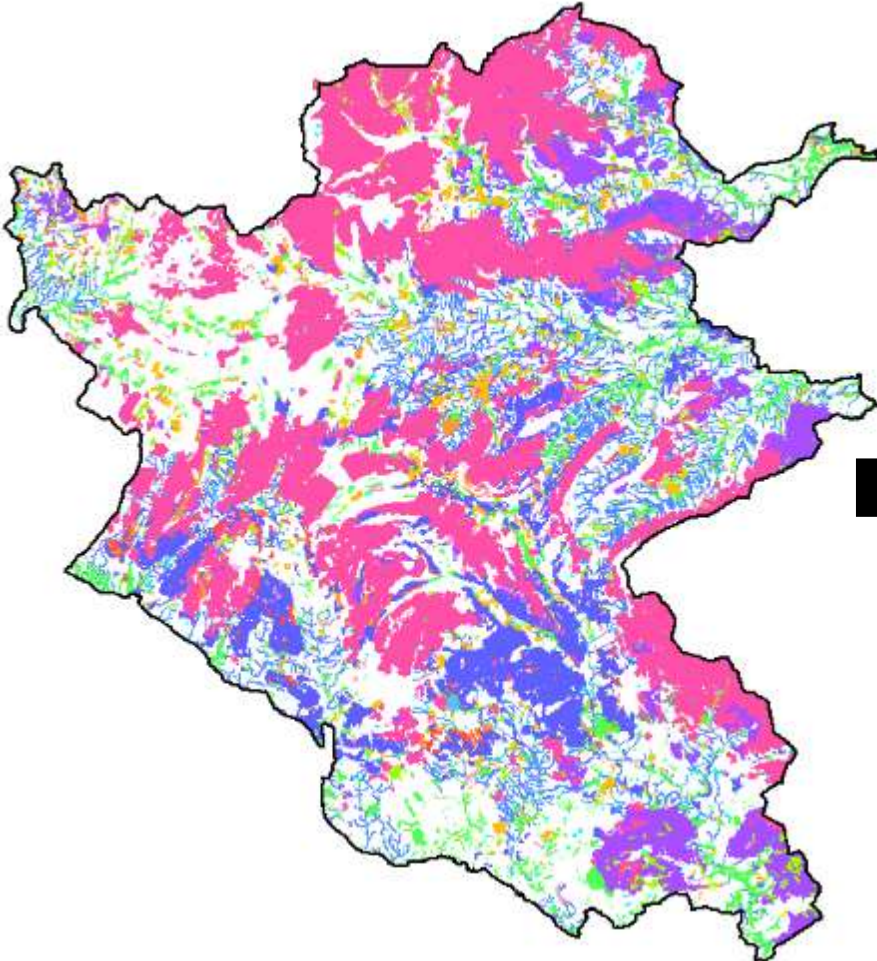
109. Establishing coherent ecological networks that are more resilient to current and future pressures;

Our approach

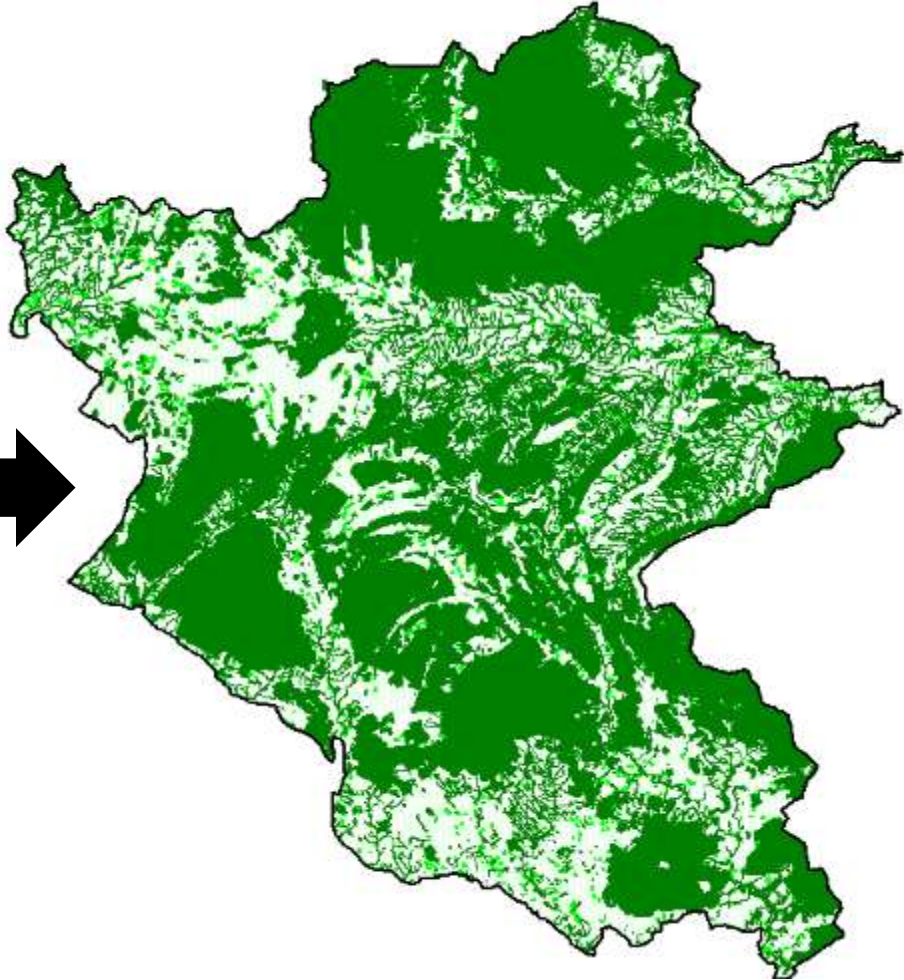
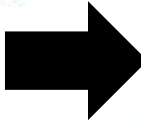
- Core areas & Stepping Stones (Published)
- Buffer Areas and HEAs (Internal)
- Policies W1 & W3

National Park scale

- W1_CoreAreas_YDNP
- W1_SteppingStones_YDNP



Underpinning outputs



Combined outputs



- **YDNP are beginning to establish more coherent ecological networks on the ground at a range of scales**
- **Every project is different**
- **The NUC LNP outputs will enable targeting across protected landscapes**

What next?

- **Effectiveness. Measuring change in connectivity.**
- **Use outputs in-combination with Condatis?**