

Great Manchester Wetlands NIA



*A Local Nature Improvement Area
Delivering a Living Landscape
for
Wildlife and People*

David Crawshaw

Lancashire Wildlife Trust (Lead Partner)

15th March 2016

Great Manchester Wetlands NIA

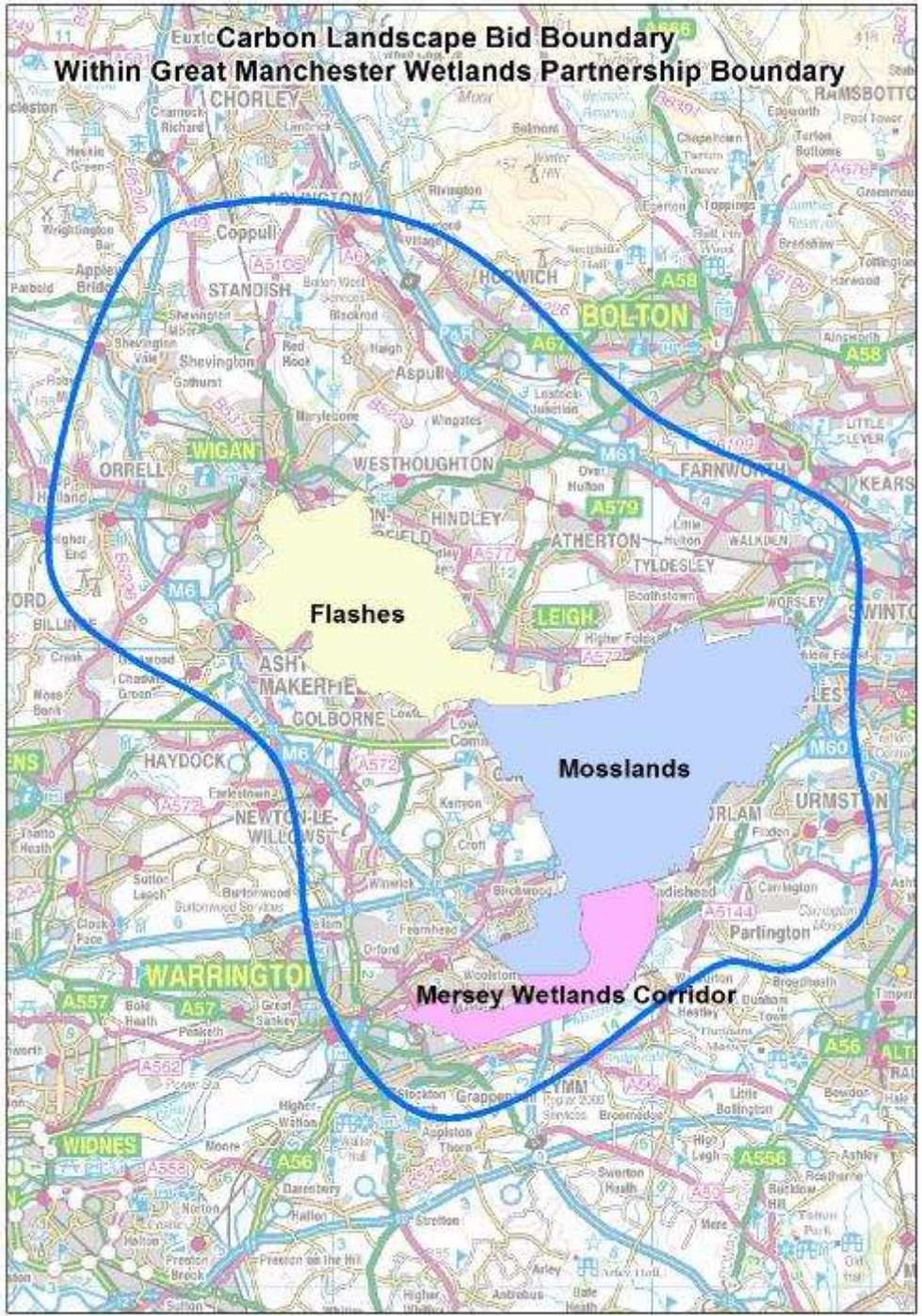


GM Wetlands Vision



By 2025 Great Manchester Wetlands will be a thriving, resilient and inspirational landscape that delivers real benefits to local communities and the local economy

**Carbon Landscape Bid Boundary
Within Great Manchester Wetlands Partnership Boundary**



Our Interest in Condatis



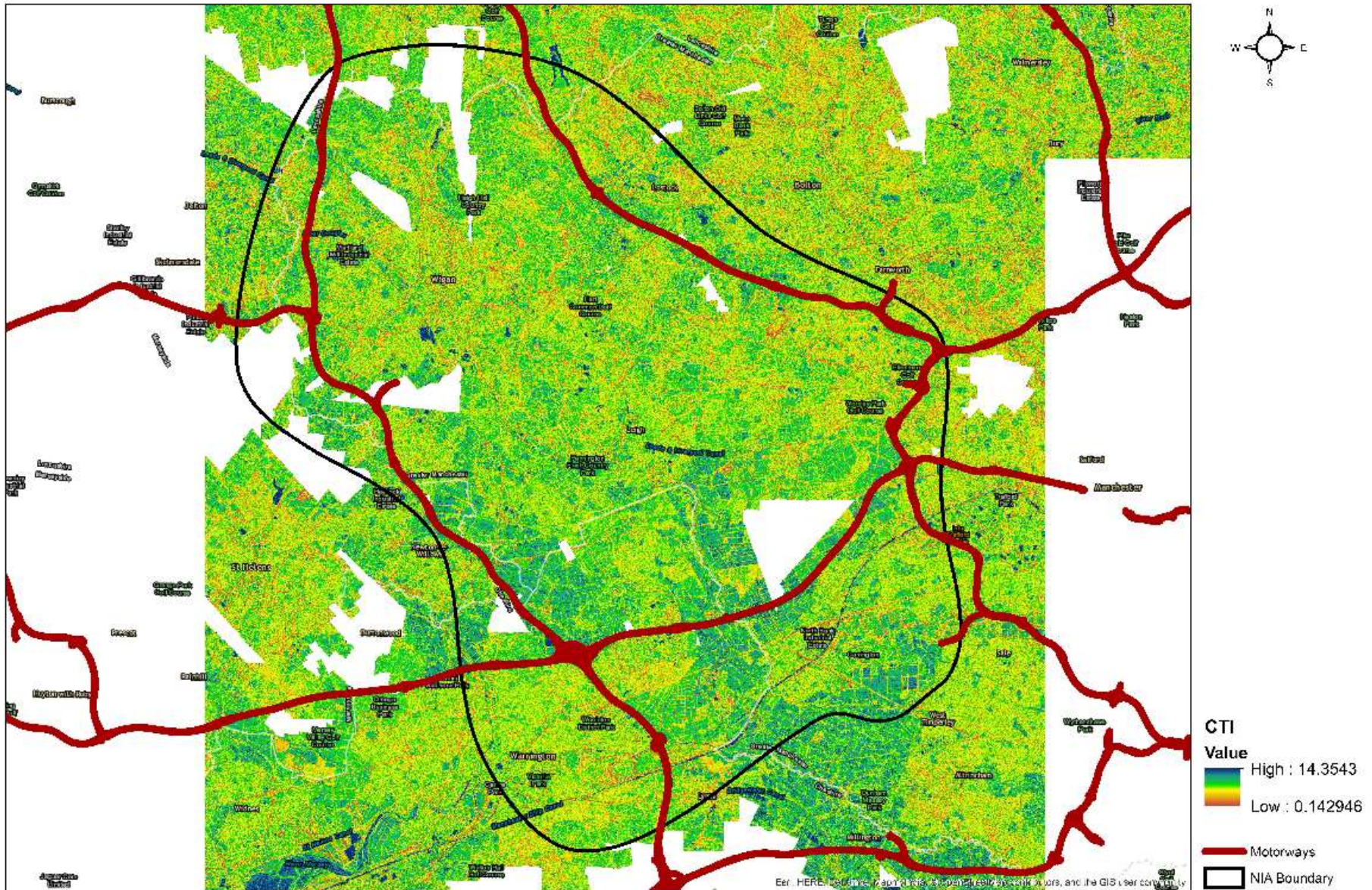
- Movement of species from south to north as temperatures rise due to climate change
- What and where are the barriers?
- Can we develop projects to remove the barriers and facilitate movement of species within the GMW area and through it?

Current Network Modelling Work



- MMU GIS specialists
- Modelling movement of water using high resolution LIDAR data
- Predicting naturally wet areas and corridors
- Combining with soil data (not yet achieved!)

Landcover Weighted CTI - Region Overview



Thank you!

