



Yorkshire
Wildlife Trust

Two areas of future application in Yorkshire

Tim Graham, Phil Whelpdale and
Jamie McEwan

www.ywt.org.uk

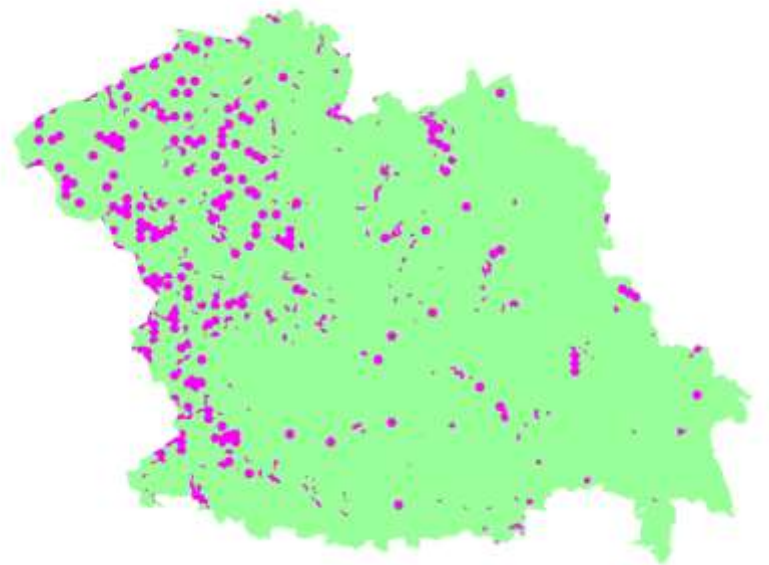
Love Yorkshire, Love Wildlife

Giving it a **gO** – how have we looked at using it?

- Use in Planning
 - Partnership
 - Local planners
 - Landscape scale conservation

Planners and Marxan

- Work with NEYEDC and Harrogate Council
- Planning audience
- Identifying target areas for protection
- Felt to be only half the story...
- Ideally resource to examine best strategic options for restoration



Ambitions on the Humberhead Levels

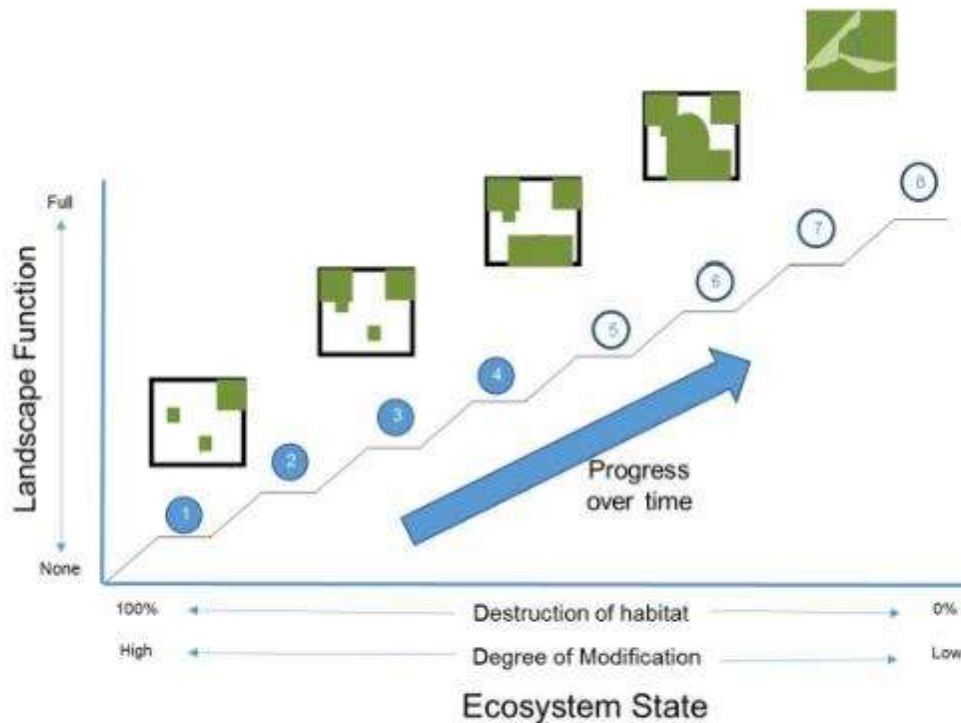
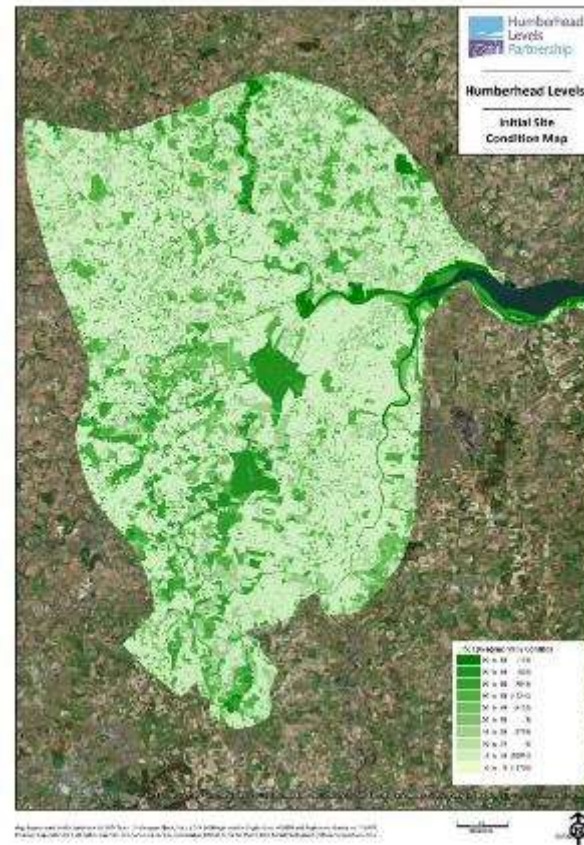


Figure 3: Restoration trajectory, with indicators, of progress towards a healthy naturally functioning landscape. Modified after Harris and Hobbs (2001). Note there are more than 8 indicators of ecosystem state, this is just an indicative diagram that can be used for clear progress communication. Like the habitat diagrams, stages could be linked to species variables e.g. x number breeding pairs or connected populations.

Ambitions on the Humberhead Levels

- Prioritisation
- Restoration areas to deliver long-term targets
- 4420ha of Priority Habitat
- Trialled use and data capacity
- Need for better application of source and sinks
- Scale of operation
- Potential to sit alongside or work with deliver projects
- Examining bespoke use with species data
- Acquisition of new land



Conclusions and Considerations

- Ambition for a Marxan/Condatis lovechild
- Part of regular iterative and robust system: strategic spatial conservation and impact assessment
- Support for regular and standardised data collection?
- Freeing up the resource for application